

Bass Viol after Richard Meares 1660

By Paul Fremantle

<https://chellistrings.co.uk>

07740 199 729

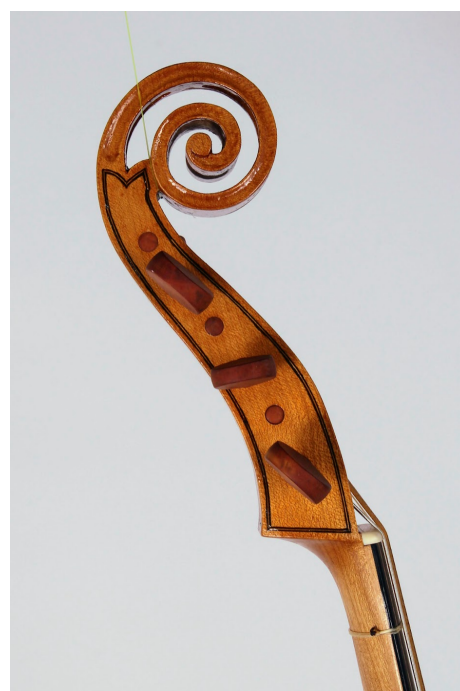
Description

A six string bass viol in flamed maple and alpine spruce.

Based on examination of the original instrument by Richard Meares I in the Royal College of Music Museum, which is one of the most original intact English viols still remaining.

Instead of the original carved head, this has a pierced scroll, based on an instrument attributed to Barack Norman, currently in Berlin. Barack Norman was Richard Meares' apprentice. The bent front is made from seven staves of alpine spruce. The double purfling on the front and back is handmade from dyed pearwood and poplar. The bridge is based on an original baroque bridge from Monical's "Shapes of the Baroque".

Tuned to A = 415Hz.



Measurements

| Item | Measurement | Notes |
|--------------------|-------------|--|
| String Length | 707mm | There are multiple bridge marks on the original instrument |
| After length | 78mm | |
| Body length | 665mm | |
| Nut to body join | 327mm | |
| Fingerboard length | 480mm | |
| Neck Stop | 19mm | |
| Tailpiece | 284mm | |
| Bridge height | 80mm | |
| Bridge Radius | 78mm | |
| Nut thickness | 5mm | |
| Nut D→D | 42mm | |
| Bridge D→D | 74mm | As the crow flies not across radius |
| Rib height | 121mm | Including front and back |
| Upper Bout | 305mm | Max width |
| C bout | 216mm | Min width |
| Lower Bout | 368mm | Max width |
| Weight | 1870g | Approximately |

Strings

| String | Type of string |
|--------|--|
| low D | Close wound on gut, ED 3.00 mm, 120cm, NRI Tradition |
| G | Unsplit Lambgut 2.24mm High twist 120cm, Orpheus |
| C | Unsplit Lambgut 1.66mm High twist 140cm, Orpheus |
| E | Unsplit Lambgut 1.34mm High twist 155cm, Orpheus |
| A | Unsplit Lambgut 1.00mm High twist 120cm, Aquila |
| High D | Unsplit Lambgut 0.76mm High twist 120cm, Aquila |